

X-10 CROSSwire™

Components

PART NO./INFO:



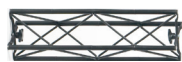
Part no. 3016
 Module 10 cm
 Weight: 0,220 kg
 Material: Composite, alu. & steel



Part no. 3017
 Module 20 cm
 Weight: 0,290 kg
 Material: Composite, alu. & steel



Part no. 3018
 Module 30 cm
 Weight: 0,360 kg
 Material: Composite, alu. & steel



Part no. 3019
 Module 40 cm
 Weight: 0,430 kg
 Material: Composite, alu. & steel



Part no. 3020
 Module 50 cm
 Weight: 0,500 kg
 Material: Composite, alu. & steel



Part no. 3021
 Module 60 cm
 Weight: 0,570 kg
 Material: Composite, alu. & steel



Part no. 3022
 Module 70 cm
 Weight: 0,640 kg
 Material: Composite, alu. & steel



Part no. 3023
 Module 80 cm
 Weight: 0,710 kg
 Material: Composite, alu. & steel



Part no. 3024
 Module 90 cm
 Weight: 0,780 kg
 Material: Composite, alu. & steel

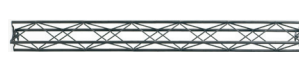


Part no. 3025
 Module 100 cm
 Weight: 0,850 kg
 Material: Composite, alu. & steel

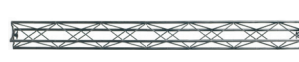
PART NO./INFO:



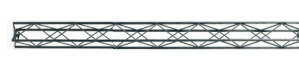
Part no. 3026
 Module 110 cm
 Weight: 0,920 kg
 Material: Composite, alu. & steel



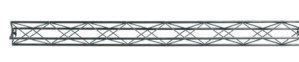
Part no. 3027
 Module 120 cm
 Weight: 0,990 kg
 Material: Composite, alu. & steel



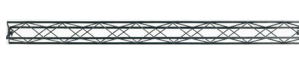
Part no. 3062
 Module 130 cm
 Weight: 1,060 kg
 Material: Composite, alu. & steel



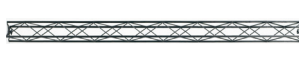
Part no. 3072
 Module 140 cm
 Weight: 1,130 kg
 Material: Composite, alu. & steel



Part no. 3028
 Module 150 cm
 Weight: 1,200 kg
 Material: Composite, alu. & steel



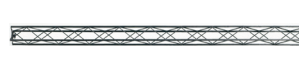
Part no. 3059
 Module 160 cm
 Weight: 1,270 kg
 Material: Composite, alu. & steel



Part no. 3076
 Module 170 cm
 Weight: 1,340 kg
 Material: Composite, alu. & steel



Part no. 3029
 Module 180 cm
 Weight: 1,410 kg
 Material: Composite, alu. & steel

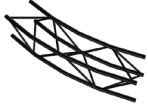


Part no. 3073
 Module 190 cm
 Weight: 1,480 kg
 Material: Composite, alu. & steel



Part no. 3030
 Module 200 cm
 Weight: 1,550 kg
 Material: Composite, alu. & steel

PART NO./INFO:



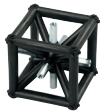
Part no. 3077
Curve Module, 40 cm, Radius 70 cm
Weight: 0,430 kg
Material: Composite, alu. & steel
Full circle = 12 pcs.



Part no. 3075
Curve Module, 60 cm, Radius 70 cm
Weight: 0,570 kg
Material: Composite, alu. & steel
Full circle = 8 pcs.



Part no. 3094
Curve Module, 60 cm, Radius 140 cm
Weight: 0,600 kg
Material: Composite, alu. & steel
Full circle = 16 pcs.



Part no. 3032
Cube
Weight: 0,390 kg
Material: Composite & steel



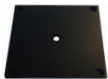
Part no. 3031
Connector
Weight: 0,030 kg
Material: Composite & steel



Part no. 3068
Connector 45 deg
Weight: 0,100 kg
Material: Composite & steel



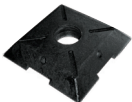
Part no. 3069
Hinge 30-230 deg
Weight: 0,100 kg
Material: Composite & steel



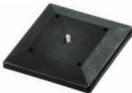
Part no. 3056
Foot 12 x 12 cm
Weight: 0,140 kg
Material: PEHD



Part no. 3057
Foot 30 x 30 cm
Weight: 0,850 kg
Material: PEHD



Part no. 3064
Foot 40 x 40 cm
Weight: 8,000 kg
Material: Metal reinforced PEHD



Part no. 3066
Foot 16 x 16 cm
Weight: 0,160 kg
Material: Composite



Part no. 3067
Foot 16 x 60 cm
Weight: 0,500 kg
Material: Composite



Part no. 3071
Foot 16 x 38 cm
Weight: 0,350 kg
Material: Composite



Part no. 3036
L-table 30 x 30 cm
Weight: 1,030 kg
Material: PEHD & steel

PART NO./INFO:



Part no. 3083
Shelf 20 x 60 cm
Weight: 0,700 kg
Material: Alu.



Part no. 3084
Shelf 20 x 80 cm
Weight: 0,900 kg
Material: Alu.



Part no. 3085
Shelf 20 x 100 cm
Weight: 1,100 kg
Material: Alu.



Part no. 3086
Shelf 20 x 120 cm
Weight: 1,300 kg
Material: Alu.



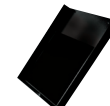
Part no. 3107
Book shelf 30 x 120 cm
Weight: 2,000 kg
Material: Alu.



Part no. 3087
Table top, 40 x 120 cm
Weight: 2,400 kg
Material: Alu.



Part no. 3095
iPad holder
Weight: 0,200 kg
Material: Alu.



Part no. 3090
Brochure holder - A4
Weight: 0,450 kg
Material: Alu.



Part no. 3108
Brochure holder - A5
Weight: 0,350 kg
Material: Alu.



Part no. 3109
Brochure holder - M65
Weight: 0,250 kg
Material: Alu.



Part no. 3106
Lamp, LED - 25W
Weight: 0,660 kg
Material: Various



Part no. 3055
Lamp bracket
Weight: 0,020 kg
Material: POM



Part no. 3041
Clip, top - 2 version, for alu list
Weight: 0,005 kg
Material: POM



Part no. 3042
Clip, bottom - 2 version, for alu list
Weight: 0,005 kg
Material: POM & elastic

PART NO./INFO:



Part no. 3082
Clip, full face
Weight: 0,010 kg
Material: P OM



Part no. 3088
Clip with spring
Weight: 0,010 kg
Material: POM & steel



Part no. 3045
Alu. list - per m.
Weight: 0,110 kg - per m.
Material: Alu.



Part no. 3080
LCD bracket, set of 2 pcs.
Weight: 1,133 kg
Material: Steel



Part no. 3096
LCD Center Bracket
Weight: 1,5 kg
Material: Steel



Part no. 3054
Clip on bracket
Weight: 0,020 kg
Material: POM



x 1 pcs.

Part no. 3110
Clip for eyelets X-10
Weight: 0,005 kg
Material: POM & Elastic



x 100 pcs.

Part no. 3111
Clip for eyelets X-10_100 pack
Weight: 0,500 kg
Material: POM & Elastic

PART NO./INFO:



Part no. 3104
Slat Bracket 120 cm
Weight: 1,600 kg
Material: Alu.



Part no. 3099
Wall Mount
Weight: 0,1 kg
Material: Alu. & PA6



Part no. 3098
Panel bracket
Weight: 0,020 kg
Material: P OM



Part no. 3070
Screw - M6 - with O-ring
Weight: 0,010 kg
Material: PA6



Part no. 3091
Transport trolley, 32 x 32 x 122 cm
9 pcs. - 120 cm
Material: T extile



Part no. 3092
Transport trolley, 42 x 42 x 122 cm
16 pcs. - 120 cm
Material: T extile



Part no. 3093
Transport trolley, 42 x 42 x 152 cm
16 pcs. - 150 cm
Material: T extile



Part no. 3100
Waterfall Bracket
Weight: 0,8 kg
Material: Steel